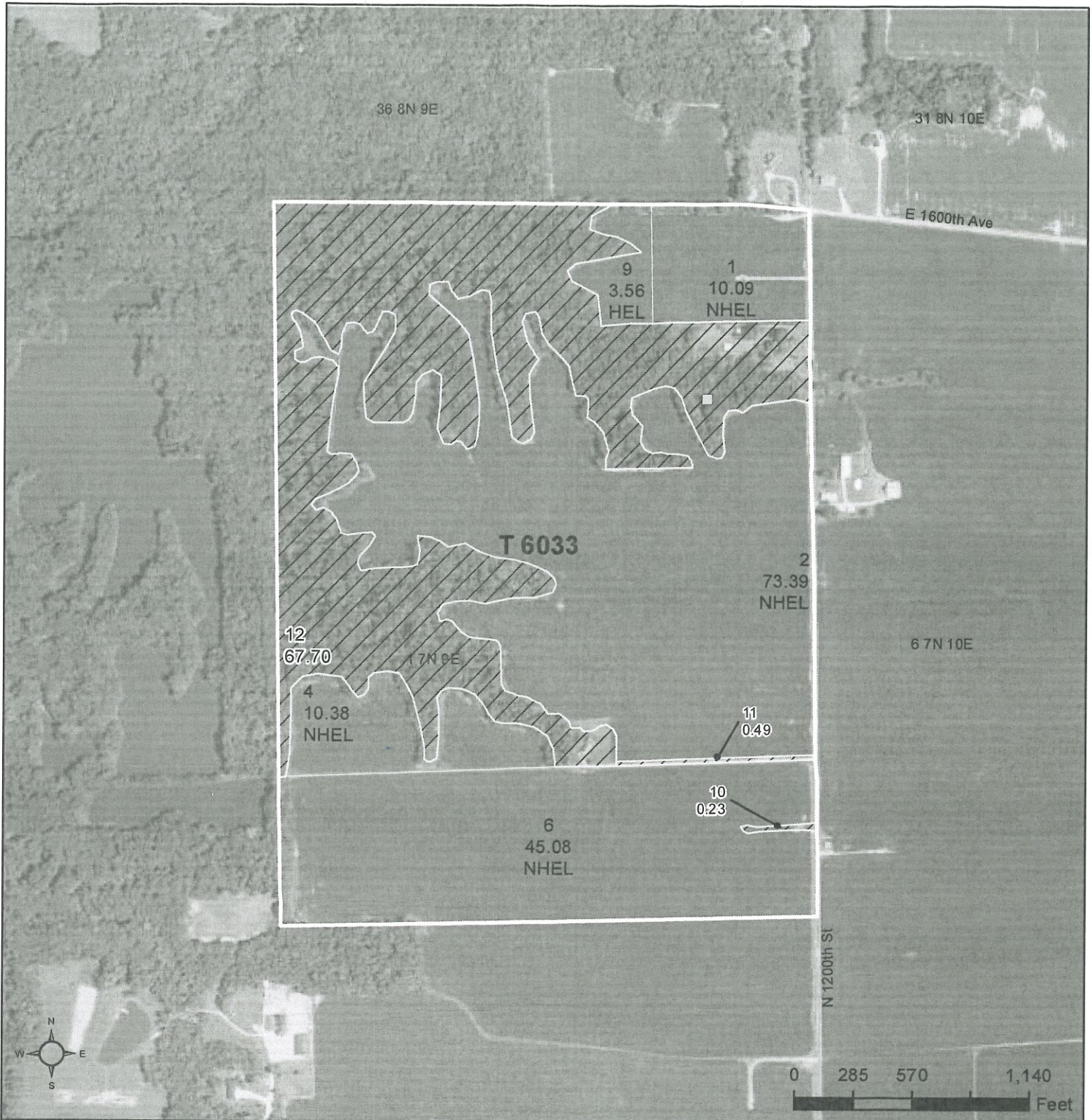




United States
Department of
Agriculture

Jasper County, Illinois

All crops have intended use of grain unless otherwise noted.
All crops are non-irrigated unless otherwise noted



Common Land Unit
Tract Boundary
Non-Cropland
Cropland

Wetland Determination Identifiers

- Restricted Use
- ▽ Limited Restrictions
- Exempt from Conservation
- Compliance Provisions

Tract Cropland Total: 142.50 acres

2023 Program Year

Map Created February 21, 2023

Farm 4595

Tract 6033

IL079_T6033

United States Department of Agriculture (USDA) Farm Service Agency (FSA) maps are for FSA Program administration only. This map does not represent a legal survey or reflect actual ownership; rather it depicts the information provided directly from the producer and/or National Agricultural Imagery Program (NAIP) imagery. The producer accepts the data 'as is' and assumes all risks associated with its use. USDA-FSA assumes no responsibility for actual or consequential damage incurred as a result of any user's reliance on this data outside FSA Programs. Wetland identifiers do not represent the size, shape, or specific determination of the area. Refer to your original determination (CPA-026 and attached maps) for exact boundaries and determinations or contact USDA Natural Resources Conservation Service (NRCS).