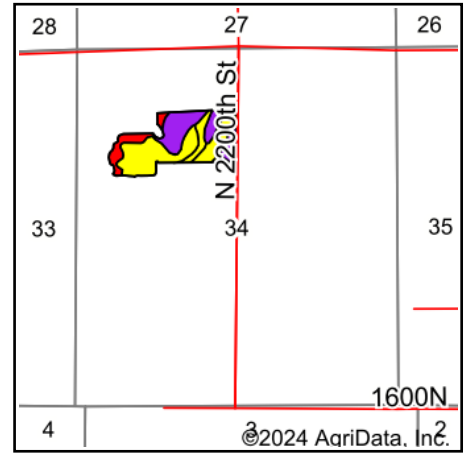
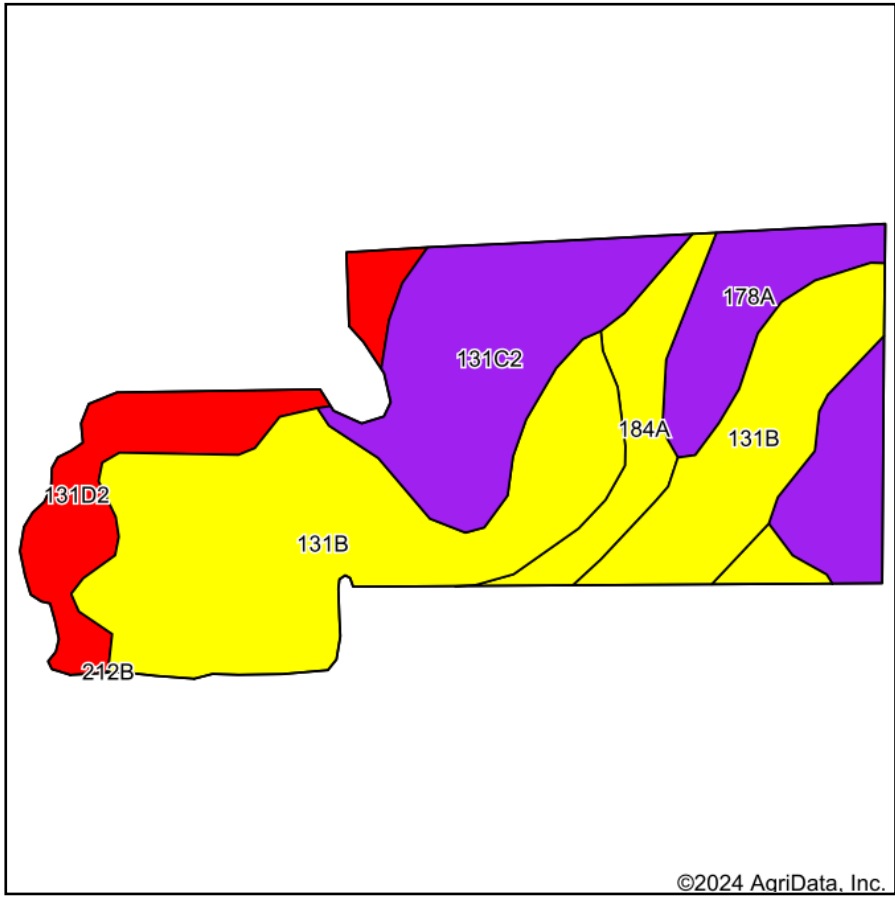


Soils Map



State: **Illinois**
 County: **Jasper**
 Location: **34-8N-14W**
 Township: **Grandville**
 Acres: **37.52**
 Date: **12/17/2024**



Maps Provided By:



Soils data provided by USDA and NRCS.

Area Symbol: IL079, Soil Area Version: 21

Code	Soil Description	Acres	Percent of field	II. State Productivity Index Legend	Subsoil rooting ^a	Corn Bu/A	Soybeans Bu/A	Wheat Bu/A	Oats Bu/A ^b	Sorghum ^c Bu/A	Grass-le gume ^e hay, T/A	Crop productivity index for optimum management	*n NCCPI Overall	*n NCCPI Corn	*n NCCPI Small Grains
**131B	Alvin fine sandy loam, 2 to 5 percent slopes	17.45	46.5%		FAV	**149	**48	**58	**73	0	**3.80	**110	68	68	56
**131C2	Alvin fine sandy loam, 5 to 10 percent slopes, eroded	7.09	18.9%		FAV	**141	**45	**55	**70	0	**3.60	**104	58	58	49
**178A	Ruark fine sandy loam, 0 to 2 percent slopes	5.48	14.6%		FAV	**130	**45	**55	**64	0	**4.40	**99	72	72	58
**131D2	Alvin fine sandy loam, 10 to 18 percent slopes, eroded	4.38	11.7%		FAV	**131	**42	**51	**64	0	**3.30	**97	58	58	48
**184A	Roby fine sandy loam, 0 to 2 percent slopes	3.12	8.3%		FAV	**144	**50	**58	**70	0	**4.60	**111	72	72	58

Soils data provided by USDA and NRCS. Soils data provided by University of Illinois at Champaign-Urbana.



Code	Soil Description	Acres	Percent of field	Il. State Productivity Index Legend	Subsoil rooting a	Corn Bu/A	Soybeans Bu/A	Wheat Bu/A	Oats Bu/A b	Sorghum c Bu/A	Grass-legume e hay, T/A	Crop productivity index for optimum management	*n NCCPI Overall	*n NCCPI Corn	*n NCCPI Small Grains
Weighted Average						142.2	46.5	56.2	69.8	*-	3.9	105.8	*n 65.9	*n 65.9	*n 54.2

Table: Optimum Crop Productivity Ratings for Illinois Soil EFOTG are sourced from Bulletin 811 calculated Map Unit Base Yield Indices, and adjusted (Adj) for slope, erosion, flooding, and surface texture. Publication Date: 02-08-2023

Crop yields and productivity (B811 EFOTG) are maintained at the following USDA web site: 2023 Illinois Soil Productivity and Yield Indices:
<https://efotg.sc.egov.usda.gov/#!/state/IL/documents/section=2&folder=52809>

****** Base indexes from Bulletin 811 adjusted for slope, erosion, flooding, and surface texture according to the Il. Soils EFOTG

b Soils in the southern region were not rated for oats and are shown with a zero "0".

c Soils in the northern region or in both regions were not rated for grain sorghum and are shown with a zero "0".

e Soils in the well drained group were not rated for grass-legume and are shown with a zero "0".

*n: The aggregation method is "Weighted Average using all components"